

ABTECH SAFETY



2023 PRICE LIST

V1.0



PART OF  **CRESTO ALLIANCE**

ABOUT US

Abtech Safety Ltd has been a trusted provider of Height Safety, Access, Confined Space Systems, and Rescue Equipment since 1991. Our mission is to help our customers stay safe by providing high-quality products and services that meet their safety needs.

Our team is comprised of knowledgeable and experienced professionals who specialise in Fall Protection, Confined Space Work and Rescue Systems. We emphasise ongoing training and personal development to ensure that we are always up-to-date with the latest safety practices and can deliver the best possible products and services to our customers.

We are proud to serve a diverse customer base that includes government bodies, utilities, and high-profile companies. Our services range from design and development to technical advice, as well as providing high-quality equipment and service.

At Abtech Safety, we are committed to maintaining the highest standards of quality and value for money. We manufacture our products in-house, ensuring that they meet the most rigorous standards of safety and quality. Our products are approved to the relevant European Standards (CE) and UKCA, where necessary.

Our goal is to help you stay safe. If you have any questions or concerns, please don't hesitate to contact us. Thank you for choosing Abtech Safety Ltd.

THE GROUP

Cresto Alliance - The world's leading safety experts working as one. Eight different market leaders have joined forces in one shared mission - to protect height workers with height safety and rescue solutions, when and where it is needed the most. The companies complement one another and give each other access to skills and resources in different countries so that you as a customer have access to all our combined experience through one single supplier. This collaborative approach and uncompromising commitment to safety are why we are trusted to protect lives

The Alliance consists of eight companies; AAK Safety, Abtech Safety, Cresto Group Sweden, Fallskyddspecialisterna, ORMS, Outreach Rescue, Safety Technology Ltd, and Safety Technology USA.

CRESTO ALLIANCE



CONTENTS

Connectors	4 - 5
Harnesses	6 - 9
Lanyards & Slings	10 - 15
Harness Kits	16 - 17
Work Positioning & Accessories	18 - 21
Rope & Rescue Kits	22 - 25
Rope Devices	26 - 29
Horizontal Systems & Ladders	30 - 31
SRL's & Winches	32 - 35
Brackets	36 - 37
Tripods & Tripod Kits	38 - 43
Stretchers & Spinal Splints	44 - 51
Davit Arms	52 - 53
Davit Bases	54 - 55
Barrel Mounts	56 - 58
Davit Systems	59 - 61
Anchors	62
Specialist Davits	63 - 65

CONNECTORS



GOZ07 - Oval Maillon

Minimum Breaking Strength 25kN

Maximum Gate Opening 16mm

Certified to EN362

£4.85



DZ10 - Delta Maillon

Minimum Breaking Strength 45kN

Maximum Gate Opening 12mm

Certified to EN362

£8.41



PPESCZ10 - Semi Circular Maillon

Minimum Breaking Strength 45kN

Maximum Gate Opening 10mm

Certified to EN362

£12.28



PPEPZ10 - Pear Shaped Maillon

Minimum Breaking Strength 36kN

Maximum Gate Opening 20.5mm

Certified to EN362

£12.24



K40SGP - Klettersteig Screwgate

Minimum Breaking Strength 50kN

Maximum Gate Opening 26mm

Certified to EN362

£16.00



S2046 - Small Snap Hook

Minimum Breaking Strength 25kN

Maximum Gate Opening 20mm

Certified to EN362

£11.76

CONNECTORS



K10DA - Oval Twistlock
Minimum Breaking Strength 25kN
Maximum Gate Opening 18mm
Certified to EN362

£12.15



K10SG - Oval Screwgate
Minimum Breaking Strength 25kN
Maximum Gate Opening 18mm
Certified to EN362

£6.34



C853 - BOA Twistlock
Minimum Breaking Strength 40kN
Maximum Gate Opening 24mm
Certified to EN362

£29.90



C842 - Rescue Screwgate
Minimum Breaking Strength 45kN
Maximum Gate Opening 25mm
Certified to EN362

£24.21



KH407 - Scaffold Twistlock
Minimum Breaking Strength 35kN
Maximum Gate Opening 53mm
Certified to EN362

£29.08



SSE/SSH - Scaffold Snap Hook
Minimum Breaking Strength 30kN
Maximum Gate Opening 65mm
Certified to EN362

£25.06

HARNESSES



AB10 - Single Point Harness

Rear 'D' Attachment Point

Small 32"-37" Chest (AB10-SML)
Standard 38"-45" Chest (AB10-STD)
Large 46"-58" Chest (AB10-XL)

£41.60

Certified to EN361



AB20 - Two Point Harness

Rear 'D' & Chest 'D' Attachment Point

Small 32"-37" Chest (AB20-SML)
Standard 38"-45" Chest (AB20-STD)
Large 46"-58" Chest (AB20-XL)

£48.96

Certified to EN361



AB20SL - Two Point Harness

Rear 'D' and Chest Soft Loop Attachment Point

Small 32"-37" Chest (AB20SL-SML)
Standard 38"-45" Chest (AB20SL-STD)
Large 46"-58" Chest (AB20SL-XL)

£51.53

Certified to EN361, EN1497

HARNESSES



ABRES - Rescue Harness

Rear 'D' & Chest 'D' Attachment Point.
Overhead 'D' for lifting and lowering

Small 32"-37" Chest (ABRES-SML)
Standard 38"-45" Chest (ABRES-STD)
Large 46"-58" Chest (ABRES-XL)

£58.45

Certified to EN361, EN1497



ABELITE - Access Elite Harness

Breathable jacket and quick connect leg
buckles for ease of donning.

c/w 30cm rear extension for use with BA

£138.74

Certified to EN361, EN1497



ABPRO - Access Pro Harness

Rear and Thoracic attachment. Ventral and Side
Links for Work Positioning

Shoulder, Waist and Leg Pads

Certified to EN361, EN358, EN1497, EN813

£209.85

CRESTO HARNESSSES



1136

Energy Pro Harness

This harness is developed with and for people within industrial tower and pole climbing industry.

Certified to EN358, EN361, EN813

£583.95



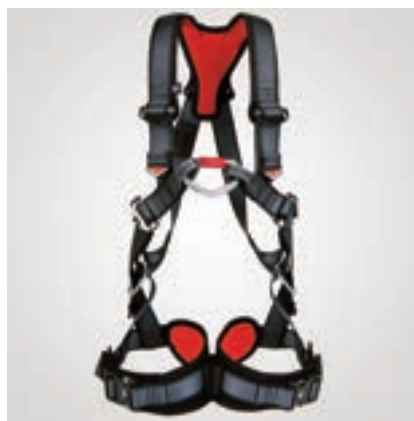
1136 WIND

Energy Pro Wind Harness

This is a customised version of the Energy Pro harness, designed for work in wind turbines

Certified to EN358, EN361, EN813

£583.95



1118

Fusion Active Harness

Fusion Active is a slim premium harness, developed for maximum comfort and simplicity of use.

Certified to EN361, CNB/P11.043 Rev2

£436.72



1137

Fusion Active Wind Harness

Fusion Active + Wind is developed together with professionals in the wind power industry to meet the needs of the wind power technician in their work

Certified to EN358, EN361, EN813

£616.72

STL HARNESSSES



UH238LB

Sirocco UH238LB Harness

Y Harness , 4 attachment points
Sliding D rings to allow movement while
attached in work position
Leather waist belt with brush leather inner.

£658.33

Certified to EN361, EN358, EN813



UH232

Sirocco UH232 Harness

The harness' fixed shoulder pads with double
adjustment lightweight mesh and fabric belt
ensure comfortable use

£435.35

Certified to EN358, EN361, EN813



138

Sirocco 138 Harness

This harness has a clear focus on comfort
and reliability the Sirocco range is made in the
UK to meet the needs of workers at height

£249.65

Certified to EN 361, EN358



UH238

Sirocco UH238 Harness

The harness includes five attachment points:
two side, two front and one rear, quick release
buckles and breathable mesh padding for
increased comfort

£456.67

Certified to EN361, EN358, EN813

LANYARDS



ABRST - Restraint Lanyard

Complete with 2 x K10SG
(other lengths and connectors
are available to order)

Certified to EN354

ABRST50 - 0.50m

£22.56

ABRST100 - 1.0m

£23.43

ABRST150 - 1.5m

£24.28

ABRST200 - 2.0m

£25.15



ABRSTADJ - Adjustable Restraint Lanyard

Complete with 2 x K10SG

Adjusts from 1.25m to 1.75m

Certified to EN358

£37.89



ABL2.0 - 2m Fall Arrest Lanyard

Complete with 2 x K10SG

Shock Absorbing pack to minimise forces

Certified to EN355, EN354

£42.24

LANYARDS



ABL2.0SH - 2m Fall Arrest Lanyard

Complete with 1 x K10SG & 1 x SSE/SSH

Shock Absorbing pack to minimise forces

Certified to EN355, EN354

£60.73



ABLTW1.5 - 1.5m Twin Fall Arrest Lanyard

Complete with 3 x K10SG

Shock Absorbing pack to minimise forces

Certified to EN355, EN354

£65.92



ABLTW1.5SH - 1.5m Twin Fall Arrest Lanyard

Complete with 1 x K10SG & 2 x SSE/SSH

Shock Absorbing pack to minimise forces

Certified to EN355, EN354

£82.44

LANYARDS



ABLRSST - Combi Lanyard

Complete with 3 x K10SG

Can be used for Fall Arrest or Restraint

Restraint Length: 1.75m

Shock Absorbing Length: 1.25m / 1.95m

Certified to EN355, EN354

£60.93



ABSRL1.5SH - 1.5m Fall Arrest Rope Lanyard

Complete with 1 x K10SG & 1 x SSE/SSH

Shock Absorbing pack to minimise forces

Certified to EN355, EN354

£105.65



ABTRL1.25SH - 1.25m Twin Fall Arrest Lanyard

Complete with 1 x K10SG & 2 x SSE/SSH

Shock Absorbing pack to minimise forces

Certified to EN355, EN354

£189.71

SLINGS



Round Sling
25mm Webbing
(other lengths are available)
Certified to EN795 Type B

AB40R - 0.40m

£7.80

AB120R - 1.2m

£9.54

AB200R - 2.0m

£10.41

AB240R - 2.4m

£11.28



Anchor Sling
Hi Vis c/w K10SG
(other lengths are available)
Certified to EN795 Type B

AB100HV - 1.0m

£19.08

AB150HV - 1.5m

£19.95

AB200HV - 2.0m

£20.82



Wire Sling
c/w Plastic Cover
(other lengths are available)
Certified to EN795 Type B

WS100 - 1.0m

£21.58

WS150 - 1.5m

£23.52

WS200 - 2.0m

£26.78

LANYARDS



11302 - Twin Fall Arrest Lanyard

Elastic Tails, Aluminium Alloy connectors.
Max Length 1.4m

Certified to EN355

£239.37



2342 - Work Positioning Lanyard

A work positioning lanyard with a simple one-hand adjustment and is multi certified in different work environments

Certified to EN 354, EN 358, EN 795

£194.43



90120POLECAT - Polecat Polechocker

Lightweight pole chocking device for standard and extra stout poles. Easy adjustable it is designed to arrest in a very short distance and minimises the effect in the event of a fall due to the unique mini shock absorber. Side handles for ease of use when climbing

Certified to EN358

£493.00



ABRAT - Rope Rat

Adjustable Work Positioning Lanyard c/w Hook and protective cover

2m Long (available in 5m & 10m Lengths)

Certified to EN358

£138.46

LANYARDS



Sirocco Mini shock lanyard

1.95M Cut Resistant Mini Shock Lanyard
Shock absorber rated to Fall Factor 2, 140kg.
Double action black snap hook – tie back loop

£173.18

Certified to EN 362, EN 355, EN 362,
EN 1891A, EN362:2004/T

90115 BSH

Chokestrap Pole Choker
Fitted with 2-stage Black Snaphook

Standard length suitable for poles dia.
180mm-350mm
Short length suitable for poles dia.
150mm-215mm

£449.27

Certified to ENA TS 43-123 Classification A1

90115 SP

Chokestrap Pole Choker
Fitted with 2-stage Black Snaphook, and
wrapped webbing handles

Standard length suitable for poles dia.
180mm-350mm
Short length suitable for poles dia.
150mm-215mm

£504.43

Certified to ENA TS 43-123 Classification A1

90115 WPS

Chokestrap Pole Choker
Fitted with 2-stage carabiner

Standard length suitable for poles dia.
180mm-350mm
Short length suitable for poles dia.
150mm-215mm

£498.40

Certified to ENA TS 43-123 Classification A1



HARNESSES KITS



AB10KIT - Working @ Height Kit 1
Single Point Harness, 2m Fall Arrest Lanyard
with Scaffold Hook and Kit Bag
Contains: AB10, ABL2.0SH, ABBAG
Certified to EN361, EN355, EN354

£98.26



AB20SLKIT - Working @ Height Kit 2
Two Point Harness, 2m Fall Arrest Lanyard
with Scaffold Hook and Kit Bag
Contains: AB20SL, ABL2.0SH, ABBAG
Certified to EN361, EN1497, EN355, EN354

£108.19



AB20LTW - Working @ Height Kit 3
Two Point Harness, 1.5m Twin Fall Arrest
Lanyard with Scaffold Hooks and Kit Bag
Contains: AB20, ABLTW1.5SH, ABBAG
Certified to EN361, EN355, EN354

£121.94

HARNESS KITS



AB10ADJ - Access Platform Kit

Single Point Harness, Adjustable Restraint
Lanyard c/w Karabiners and Kit Bag

Contains: AB10, ABRSTADJ, ABBAG

Certified to EN361, EN358

£93.91



COMBI - Combination Harness Kit

Single Point Harness, Fall Arrest / Restraint
Lanyard c/w Karabiners and Kit Bag

Contains: AB10, ABLRST, ABBAG

Certified to EN361, EN355, EN354

£116.95



AB10/2.4T - Fall Arrest Kit

Single Point Harness, 2.4m Webbing Fall
Arrest and Kit Bag

Contains: AB10, AB2.4T, ABBAG

Certified to EN361, EN360

£134.41

ACCESSORIES - HARNESSSES



ABJ-Y

Hi Vis Jacket with opening for harness attachment points.

Velcro loops for fixing in harness.

Also available in Orange (ABJ-O)

Certified to EN471

£20.16



ABWP - Work Positioning Belt

Waist Belt with side attachment points for Work Positioning and three tool loops. Can be added to any industrial harness

Certified to EN358

£52.96



ABLSS - Leg Suspension Strop

Designed to hold a person in a vertical position after a fall, enabling them to stand

c/w Connector

Not PPE

£22.90

ACCESSORIES - WORK/RESCUE



ABNAP - Rescue Nappy

Loops positioned to enable lifting adults or children

£76.21

Tested to EN1497



ABBS - Bosuns Seat

For a seated position when in a full body harness with belt and side 'D's

Not PPE

£54.80



ABBC - Bosuns Chair

For a seated position when in a full body harness

Complete with foot rest and tool pockets

Not PPE

£284.18

ACCESSORIES - BAGS



RRST

STL Full Mesh Bolt Bag (black and red) with straps

£78.00

Line Ops Rescue Bag

Line Ops Rescue Bag, A set of 9 removable pouches of different sizes carry your kit, each pouch has a pair of quick-release belt loops, clear front, drain holes and reflective tape. A karabiner storage 'daisy chain' is also included on a fast-release buckle. Produced from tough water-resistant PVC with reflective tape on both the outer bag and all inner pouches. Reflective RESCUE panel on front.

£535.82

STL9318

Bolt Bag

Large Vinyl Bolt Bag – fits all utility harnesses

£82.20

STL9417/18

Canvas Tool Bag

TL Canvas Tool Bags provide a practical solution when working. They can be attached to any utility harness using strong clip buckles to secure them.

Available in both medium and large sizes.

£62.52

STL-9417 is medium

STL-9418 large



ACCESSORIES - BAGS



ABBAG - Kit Bag

Kit bag for holding Harness and Lanyard. Zip compartment and padded shoulder straps.

£14.42



Rope Bag

Roll Top with Stealth Buckle

Two Shoulder Straps

Drainage Hole in Base

ABSRBAG - 50m

£60.10

ABMRBAG - 100m

£62.67

ABLRBAG - 150m

£66.50

ABXLRBAG - 200m

£70.35

ROPE



LR/11 - 11mm Static Rope
Polyamide core and sheath
34kN
Certified to EN1891 Type A

LR/11/1 - 1m

£2.56

LR/11/50 - 50m

£104.09

LR/11/100 - 100m

£208.18

LR/11/200 - 200m

£416.37



F8
Heat Shrunk Fig.8 and K10SG
18kN

£14.56



ABR - 16mm Rope
Nylon c/w Plastic Eyes
MBL 6000kg
Certified to EN ISO 1140

ABR5 - 5m

£65.87

ABR10 - 10m

£83.87

ABR15 - 15m

£101.86

ABR20 - 20m

£119.81

RESCUE SYSTEMS



VRS

Vertical Rescue System
15m Working Length

Pre-Rigged Pulley system and reach pole for
rescuing a person suspended in a harness

Certified CE Products used in this system

£761.18



ABRALF

2 Way Locking Rescue System. 15m Working
Length at 5:1

350kg Working Load Limit

Certified CE Products used in this system

£990.95



VWR1

Vertical Work & Rescue System.
15m Working Length

Certified CE Products used in this system

£682.24

RESCUE SYSTEMS



RPX Original (100m)

For evacuation from high heights, lifting deep shafts to advanced rescues, the height worker can feel confident that the equipment performance is verified.

£2903.67

Certified to EN341:2011 cl.A; EN1496:2006



Smartline X (100m)

Smartline X is the smallest and lightest personal evacuation device in the World. With a maximum user weight of 140kg, maximum descent distance of 200m and weighing 3.8kg (200m)

£1136.73

Certified to EN341:2011/2D



RESCUE SYSTEMS



Ladder Rescue Kit

The ladder kit provides a rescue function, allowing simple lowering of a casualty in case of emergency. Length of rope can be varied

£762.30



MEWP Evacuation Kit

Easy to use device with anti-panic feature
One handed rope adjustment to lengthen or shorten the rope as needed
Short ladder to assist with getting out of the bucket

£525.38



Pole Top Rescue Kit

Easy to use device with anti-panic feature
One handed rope adjustment to lengthen or shorten the rope as needed
Wear protective sling to prevent damage from the pole

£530.83



Tower Rescue Kit

Large pear shaped karabiner for easy attachment to tower sections
Auto retracting safety knife blade to prevent damage to components or user
Easy to use device with anti-panic feature
One handed rope adjustment to lengthen or shorten the rope as needed
Device is certified for descent, work positioning and fall arrest

£823.23

EDGE PROTECTION



ER100-4

Edge Roller - batch of 4 modules linked with maillons

Can connect modules together

Not PPE

£123.82



CRP70 - Canvas Rope Protector

Velcro edge to create a tube for rope to pass through

Not PPE

£39.04



EPPLUS - Ribbed Edge Protection

Reinforced strips for extra rope protection

Eyelets for anchoring

Not PPE

£72.86

ROPE DEVICES



27001K

Power Climber 240-11 with 100m rope
Ø 11 mm with rope bag

240 kg (max. 2 persons)

£5963.00

211320 - Device Bag

£368.77

279006 - 100m Rope

£470.77



RP209 - Rope Grab

Can be removed at any point
on the rope.

10.5-13mm Rope

Certified to EN353-2

£83.13



ABRP - Rope Grab (Manual)

16mm Rope

£43.36



RP220 - Ascender (RH)
(LH available)

9-13mm Rope

Certified to EN567, EN12841

£108.51



RP880 - D4 Descender
(c/w panic brake)
RP881 - D4 Pro Descender
(no panic brake)

10.5-11.5mm Rope

Certified to EN12841

£218.51

RIGGING



RP705 - Capture Pulley

One Way Locking Progress Capture Pulley

10 - 13mm Rope

Certified to EN567, EN12278

£232.62



RP500 - Rocker

Rocker Work Positioning Device

10.5 - 12.7mm Rope

Certified to EN353-2, EN358, EN12841-A

£95.82



Rigging Plates

Small, Medium & Large

High Strength Aluminium

20mm Dia. Attachment Holes

RP300 - 36kN

£30.10

RP310 - 40kN

£42.23

RP320 - 45kN

£87.36

PULLEYS



RP012 - Single Pulley

Max. 13mm Rope

Min Breaking Strength 36kN

Certified to EN12278

£30.38



RP030 - Small Double Pulley

Max. 13mm Rope

Min Breaking Strength 36kN

Certified to EN12278

£53.11



RP034 - Double End Pulley

Max. 13mm Rope

Min Breaking Strength 36kN

Certified to EN12278

£43.64



RP033 - Double Pulley

Max. 13mm Rope

Min Breaking Strength 36kN

Certified to EN12278

£60.56



RP066 - Stainless Pulley

Max. 16mm Rope

Min Breaking Strength 50kN

Certified to EN12278

£113.80



RP700 - Large Double Pulley

Max. 13mm Rope

Min Breaking Strength 30kN

Certified to EN12278

£162.10

HORIZONTAL SYSTEMS



HONOR-T-KIT

25m Horizontal System c/w 2 x 15m Fall Arrest Devices

Kit for 2 user (can have up to 5 users)

Certified to EN 795/A1 CLASS C, EN360

£3473.74



ABTL20-2

20m Horizontal System

For up to 2 Users

Certified to EN795/A1 CLASS C

£260.62



CONT

Container Safe Kit - for working on top of shipping containers

Kit Bag, Harness, Restraint Kit & Connectors

Certified CE Products used in this system

£568.85



ROOFER KIT

Complete Roofer kit including roof anchor, harness, rope, helmet, lanyard and bag

Certified CE Products used in this system

£493.92

LADDERS



FLEXIS

Single Flexi Ladder

3m Lengths. Can be connected together

NOT PPE

£112.76



FLEXIH

Ladder Hanger for Double Flexi Ladder

Complete with connectors

NOT PPE

£147.67

FLEXID

Double Flexi Ladder

3m Lengths. Can be connected together

NOT PPE

£182.16

WEBBING SRL'S

TORQ[®]



AB2.4T

2.4m Webbing Fall Arrest Device

Swivel Indicator and Snap Hook

Certified to EN360, ANSI Z359.1

£78.39



AB2.4TTW

2.4m Twin Webbing Fall Arrest Device

Swivel Indicator and Snap Hooks

Tested to EN360 (each of the two units is tested and certified to EN360)

£158.23



Webbing Fall Arrest Device

Plastic Housing

Indicator Hook

Certified to EN360

ABRL03W - 3m Webbing

£115.87

ABRL06W - 6m Webbing

£133.70

WIRE SRL'S

TORQ[®]



15m Fall Arrest Device
5mm Galvanised Cable
AB15T Swivel Anchor Eye and Indicator Hook
Certified to EN360
ANSI Z359.1

£588.52

15m Fall Arrest Winch
5mm Galvanised Cable
AB15RT Swivel Anchor Eye and Indicator Hook
Can be used for Fall Arrest or as a Winch
Certified to EN360, EN1496
ANSI Z359.1



£867.88



Fall Arrest Device
Swivel Anchor Eye
Indicator Hook
Certified to EN360

ABRL06 -
6m Galvanised Cable

£303.58

ABRL10 -
10m Galvanised Cable

£360.22

ABRL20 -
20m Galvanised Cable

£527.77

SRL'S & AUTO DESCENT



AB30T
30m Fall Arrest Device
Aluminium Casing
5mm Galvanised Cable
Certified to EN360

£899.88



AB30RT
30m Fall Arrest Recovery Winch
Aluminium Casing
5mm Galvanised Cable
Certified to EN360, EN1496

£1349.80



HAS18/IKV17
18m Fall Arrest / Auto Descender
c/w Connector for hanging.
5mm Galvanised Cable
Certified to EN360, EN341

£2072.85

WINCHES



18561

27m Man Riding Winch

WLL - 205kg

Certified to EN1496

£3298.00



60005

30m Man Riding Winch

WLL - 141kg (282kg reeved)

Certified to EN1496

£1938.56



60011

45m Man Riding Winch

WLL - 141kg (282kg reeved)

Certified to EN1496

£2948.46



60257

30m Materials Winch

WLL - 315kg

Not PPE

£741.64

BRACKETS



T05T
AB15RT to Tripod

£112.64



60176/2
AB15RT to Davit
(also requires 60209 bracket on the davit)

£153.50



ALKO
Tripod Clamp

£22.77



T05TW2
60005 / 60011 / 60257 to Tripod

£173.49



60141/EYE
Davit Anchor Eye

£119.60

BRACKETS



60209
Davit Bracket

£199.03



60294
Analog Davit Bracket

£180.59



T05T-30
AB30RT to Tripod

£148.07



T05T-30D
AB30RT to Davit

£154.54



ABDR-KIT
Winch Davit Reeve Kit (for use with 60209)

£97.94

TRIPODS



T3

Two Person Tripod. 3 Overhead Pulleys, 3 Underslung Eyes.
Telescopic Legs

Leg Span 110cm - 170cm. Height 140cm - 240cm

Certified to EN795 Type B

£828.18

TRIPODT3[®]

TRIPODS



RT3

Two Person Rescue Tripod. 3 Overhead Pulleys, 3 Underslung Swivel Eyes. Detachable Telescopic Legs

Leg Span 130cm - 200cm. Height 200cm - 260cm

Certified to EN795 Type B

£932.62

TRIPODT3[®]

TRIPOD KITS



CST1KIT

Confined Space kit with 15m Fall Arrest Winch

Contains: T3, AB15RT and T05T

Certified to EN795 Type B, EN360, EN1496

£1790.61

*If you require your kit with an RT3 instead of a T3 Tripod, amend code to CSRT*KIT*

ADD (to kit)

£169.00



CST2KIT

Confined Space kit with 15m Fall Arrest Winch and Rescue Harness

Contains: T3, AB15RT, T05T and ABRES

Certified to EN795 Type B, EN360, EN1496, EN361, EN1497

£1848.48



CST3KIT

Confined Space kit with 27m Man Riding Winch

Contains: T3, 18561 and ALKOS

Certified to EN795 Type B, EN1496

£4130.00

TRIPOD KITS



CST4KIT

Confined Space kit with 27m Man Riding Winch and Rescue Harness

£4187.87

Contains: T3, 18561, ALKOS and ABRES

Certified to EN795 Type B, EN1496, EN361, EN1497



CST5KIT

Confined Space kit with 30m Man Riding Winch

£2910.83

Contains: T3, 60005 and T05TW2

Certified to EN795 Type B, EN1496



CST6KIT

Confined Space kit with 30m Man Riding Winch and Rescue Harness

£2968.69

Contains: T3, 60005, T05TW2 and ABRES

Certified to EN795 Type B, EN1496, EN361, EN1497

TRIPOD KITS & BAGS



CST7KIT

Confined Space kit with 30m Fall Arrest Winch

Contains: T3, AB30RT and T05T-30

Certified to EN795 Type B, EN360, EN1496

£2302.79



CST8KIT

Confined Space kit with 30m Fall Arrest Winch and Rescue Harness

Contains: T3, AB30RT, T05T-30 and ABRES

Certified to EN795 Type B, EN360, EN1496, EN361, EN1497

£2360.66



T07

Tripod Carry Bag
c/w Velcro securing straps

£95.42



RT07

Rescue Tripod Carry Bag
c/w Velcro securing straps

£104.09

DEVICE BAGS



TORQBAG

Carry Bag with Solid base for TORQ Devices

Zip closure and internal velcro straps

£67.66



WINCHBAG

Carry Bag with Solid base for Winches

Zip closure and internal velcro straps

£67.66



EU39

Plastic Winch Box with foam inserts

Suitable for storing and shipping

£89.85

STRETCHERS



SLIX100

Rollable Rescue Stretcher

Colour coded user replaceable straps

Certified to CE 93/42/EEC CLASS 1

£598.53



SLIXVHH

Vertical & Horizontal Positioning Straps for SLIX

Colour coded eyes c/w Maillons

Certified to EN358

£92.35



SLIX100BAG

Rolltop carry bag for SLIX100

Shoulder Straps and front pocket

Not PPE

£77.00

STRETCHERS



SLIX100KIT

SLIX100 Stretcher c/w Strops and Carry Bag

Contains: SLIX100, SLIXVHH and SLIX100BAG

Certified to CE 93/42/EEC CLASS 1, EN358

£693.52

SLIX[®]

STRETCHERS



SLIX100XL

Rollable Rescue Stretcher for Bariatrics

Colour coded user replaceable straps

Certified to CE 93/42/EEC CLASS 1

£947.74



SLIXVHXL / SLIXHHXL

Vertical & Horizontal Positioning Straps for
SLIX100XL

Colour coded eyes c/w Maillons

Certified to EN358

SLIXVHXL
Vertical

£92.35

SLIXHHXL
Horizontal

£92.35



SLIXBAGXL

Rolltop carry bag for SLIX100XL

Shoulder Straps and front pocket

Not PPE

£77.00

STRETCHERS



SLIX100XLKIT

SLIX100XL Stretcher c/w Strops and Carry Bag

Contains: SLIX100XL, SLIXVHXL, SLIXHHXL and SLIXBAGXL

Certified to CE 93/42/EEC CLASS 1, EN358

£1107.24

SLIX[®]

STRETCHERS



SLIXRR

Rapid Response Stretcher c/w Carry Bag

Carry handles and top eyelet for drag lines

Certified to CE 93/42/EEC CLASS 1

£360.86

SLIX®



SLIX50COM

SLIX50 combined with integral Spinal Splint and Carry Bag

Articulated skirt for tight confined spaces

Certified to CE 93/42/EEC CLASS 1

£1185.84



SLIXHALV

SLIX Half Stretcher and Carry Bag

Arms out half stretcher with Groin Straps

Certified to CE 93/42/EEC CLASS 1

£475.05

STRETCHERS



RS100

Rollable Rescue Stretcher Kit in Carry Bag

Contains: Lifting Sling and connectors

Not PPE

£697.44



ST/044

Basket Stretcher

Dimensions 217x62x18.5cm - 13.5kg
Load Capacity 278kg

£960.85

LIFTING BRIDLES



SPALB

Stretcher Positioning Strops

c/w Connectors

Not PPE

£149.08



ABSS

Adjustable Stretcher Positioning Strops

c/w connectors

520mm - 1880mm

Certified to EN358

£146.54



SLIXWS

Wire Stretcher Anchor Strops. Colour Coded for SLIX100

c/w Connectors

Certified to EN795 Type B

£80.25

SPINAL SPLINTS



SLIXSS

SLIX Spinal Splint. Attaches into SLIX100 and SLIX100XL. Can be used with other stretchers

£526.40

Complete with Groin straps and Head Pocket for added support

Certified to CE 93/42/EEC CLASS 1



EFS102

Spinal Splint

£256.41

NOT PPE



EFS102/2

Spinal Splint with Floatation Aid

£312.82

NOT PPE

DAVIT ARMS



30104

Small Upper Davit

£902.03

28" (711mm) Reach, 54" (1390mm) Height

Certified to EN795 Type B

30105

Large Upper Davit

£1202.72

28" (711mm) Reach, 66" (1676mm) Height

Certified to EN795 Type B



30108

Small Lower Davit

£726.64

40" (1016mm) Height

Certified to EN795 Type B

30109

Large Lower Davit

£783.03

52" (1320mm) Height

Certified to EN795 Type B

ANALOG DAVIT



50048

Analog Davit

78" (1.98m) Reach, 111" (2.84m) Height

Certified to EN795 Type B

**Pictured with AB15RT device and bracket, not included*

£3018.53

DAVIT BASES



30031

Floor Mount

Bolt on base for Tuff Davits

Certified to EN795 Type B

£483.08



30032

Wall Mount

Bolt on wall mount for Tuff Davits

Certified to EN795 Type B

£441.31

DAVIT BASES



30023

Flush Floor Mount for Tuff Davits

For casting into fresh concrete

£450.95



30021

Flush Floor Mount for Tuff Davits

For existing concrete

Certified to EN795 Type B

£450.95



30019

Sleeve Cap

Provides a seal over the davit socket when not in use

NOT PPE

£43.90

BARREL MOUNTS



30036

2.25" (57mm) Barrel Mount

For mounting onto shoring and trench boxes

Certified to EN795 Type B

£1193.28



30161

5" (127mm) Barrel Mount

For mounting onto shoring and trench boxes

Certified to EN795 Type B

£1401.51



30166

7" (181mm) Barrel Mount

For mounting onto shoring and trench boxes

Certified to EN795 Type B

£1512.77

BARREL MOUNT KITS



30036KIT

2.25" Barrel Mount Kit c/w 30105, 30109, 60005, AB15RT and Brackets

For mounting onto shoring and trench boxes

Certified to EN795 Type B, EN360, EN1496

£6471.66

*If you require your davit kit with an AB30RT instead of an AB15RT, amend code to *****KIT-30*

ADD (to kit)

£342.00

30161KIT

5" Barrel Mount Kit c/w 30105, 30109, 60005, AB15RT and Brackets

For mounting onto shoring and trench boxes

Certified to EN795 Type B, EN360, EN1496

£6677.81

30166KIT

7" Barrel Mount Kit c/w 30105, 30109, 60005, AB15RT and Brackets

For mounting onto shoring and trench boxes

Certified to EN795 Type B, EN360, EN1496

£6787.95

ADJUSTABLE BARREL MOUNT



30029

2.25" - 25" (57mm - 635mm)
Adjustable Barrel Mount

For mounting onto shoring and trench boxes

Certified to EN795 Type B

£2167.38



30029KIT

Adjustable Barrel Mount Kit c/w 30105,
30109, 60005, AB15RT and Brackets

For mounting onto shoring and trench boxes

Certified to EN795 Type B, EN360, EN1496

£7436.02

COUNTERWEIGHT KITS



30073

Counterweight Base

£3044.49

Certified to EN795 Type B



30073KIT

Counterweight Base c/w 30105, 30109, 60005, AB15RT, Brackets and 360kg

£10436.70

Certified to EN795 Type B, EN360, EN1496



WEIGHT30

2 x 15kg Weight Plates

£179.49

For use on the Counterweight Bases

DAVIT SYSTEMS



30040KIT

5ft to 10ft Pole Hoist c/w 30m Man Riding Winch

£5236.05

Certified to EN795 Type B, EN1496



30070KIT

4 Piece Base c/w 30 Man Riding Winch and Bracket

£6051.44

For access into confined spaces

Certified to EN795 Type B, EN1496



30093KIT

Vehicle Hitch Mount Base c/w 30105, 30109, 60005, AB15RT and Brackets

£7013.12

For access into confined spaces

Certified to EN795 Type B, EN1496

DAVIT SYSTEMS



30321/235

Horizontal Entry Clamp and Arm Assembly

For mounting onto tank collars

Certified to EN795 Type B

£6972.90



30234/235

Horizontal Entry 72" Post and Arm Assembly
(Davit Base not included)

For horizontal access and egress

Certified to EN795 Type B

£3747.15

ANCHORS



CT102
Removable Anchor
(20mm Drilled Hole)
Certified to EN795 Type B

£235.31



GG201
Concrete Anchor - 330mm Beam
(20mm Drilled Hole)
Certified to EN795 Type B

£225.56



CT101
Beam Clamp
Beam Flange Width:
3.5" - 14" / 87mm - 350mm
Certified to EN795 Type B

£221.68

TUFF STEPS



TUFF STEPS

Narrow and Wide Step sections that can be joined together to create walkway on flat or inclined surfaces.

Handrails can be added to one or both sides

POA

THE EXOSPHERE



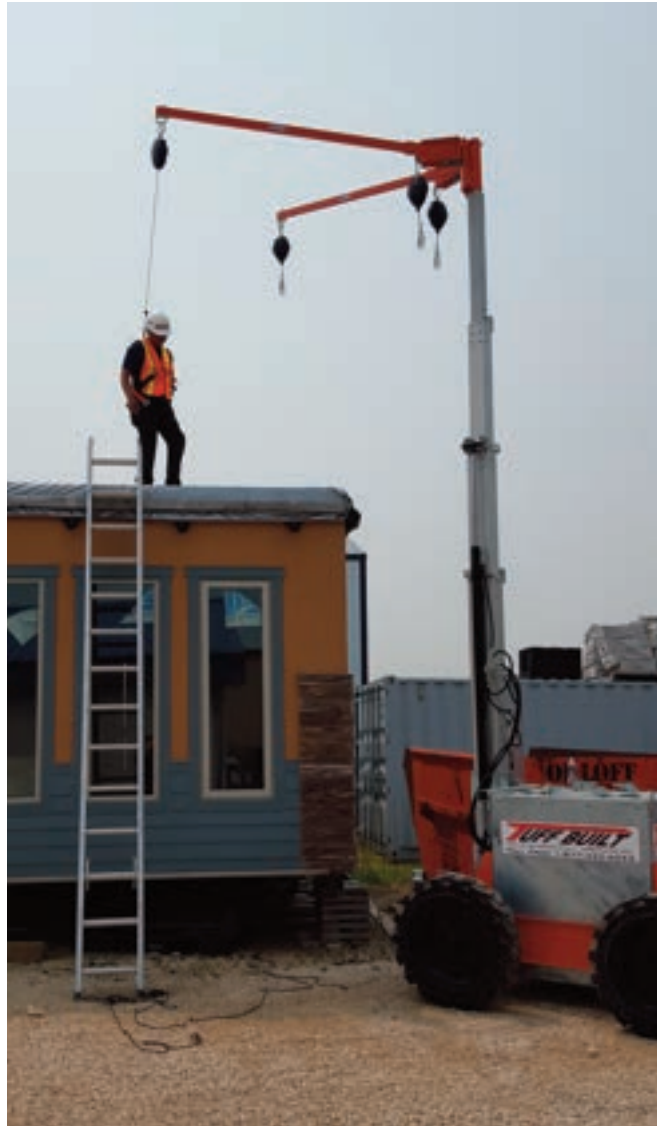
THE EXOSPHERE

Mobile Davit with trailer

Please contact for options and prices

POA

THE EXOSPHERE 4x4



THE EXOSPHERE 4x4

Mobile Davit with remote control 4x4 Base

Please contact for options and prices

POA

HOW TO ORDER

ALL ORDERS MUST BE ISSUED IN WRITING BY EMAIL/POST

Email: sales@abtechsafety.com

Post: Abtech Safety Ltd, Unit 1&2 Parkway Business Centre, Deeside Industrial Park, CH5 2LE

Office Hours:

Monday to Thursday - 8:30am to 4:30pm

Friday - 8:30am to 2:00pm

All orders will be issued to account holders only. If you do not have an account you can request an application for credit via the above methods of contact. Alternatively you can request for a proforma invoice, which must be paid in full before the despatch of any goods.

MINIMUM ORDER QUANTITY £25.00 before carriage and VAT

EXPORT MINIMUM ORDER QUANTITY £250.00 - Ex Works

UK DELIVERY

Orders received before 12pm will be sent next day before 5:30pm delivery subject to availability and account status.

Timed delivery is available at a surcharge and subject to availability and account status.

We are not open to the general public nor do we operate a Trade Counter. If you do, however wish to collect an order, please specify on your PO and we will contact you to make arrangements

PAYMENT

Account Holders

Details of payment accounts will be specified on your invoice.

VAT No. 595703115 **Co. Reg** 2656103

ACCREDITATIONS

BS EN ISO9001:2015--- Quality Management System

The Quality Management System maintained by Abtech Safety Limited is recognised as the highest quality system available. All products manufactured and serviced by the company are included within this system. The system is audited by independent auditors at regular intervals. All PPE products are in conformity with the provision of the PPE Regulation (EU) 2016/425 under the supervision of the notified body: Satra Quality Assurance Ltd. Rockingham Rd, Kettering, Northampton NN16 9JH.

CE Marking and Product Conformance

In accordance with the PPE Regulation (EU) 2016/425, Module B (Annex V) EU Type Examination and Module C (Annex VI), Module D (Annex VIII) all products designed and manufactured by Abtech Safety Limited classified as Personal protection equipment are independently tested to the relevant European Standard. All PPE products conform to the European Standards stated and are subject of EC Certification of Conformity issued by: SATRA Technology Europe Ltd (Ireland) Bracetown Business Park, Clonee, Co. Meath, D15 YN2P, Ireland (NB2777)



- EN 341 : 2011 Descender Devices for Rescue
- EN 353-2 : 2002 Guided Type Fall Arresters On A Flexible Line
- EN 354 : 2010 Lanyards
- EN 355 : 2002 Energy Absorbers
- EN 358 : 2018 Belts & Lanyards for Work Positioning and Restraint
- EN 360 : 2002 Retractable Type Fall Arrestors
- EN 361 : 2002 Full Body Harnesses
- EN 362 : 2004 Connectors
- EN 567 : 2013 Rope Clamp
- EN 795-Type B : 2012 Temporary Anchor Devices
- EN 813 : 2008 Sit Harnesses
- EN 1496 : 2017 Rescue Lifting Devices
- EN 1497 : 2007 Rescue Harnesses
- EN 1891 - Type A : 1998 Low Stretch Kernmantle Rope
- EN 12278 : 2007 Pulleys
- EN 12492 : 2012 Helmets for Mountaineers

TERMS & CONDITIONS

TERMS & CONDITIONS

The customer's attention is drawn in particular to the provisions of clause 8.

1. INTERPRETATION

1.1 Definitions:

Business Day: a day other than a Saturday, Sunday or public holiday in England, when banks in London are open for business.

Business Hours: the period from 8:30 am to 4:30 pm on any Business Day.

Conditions: the terms and conditions set out in this document as amended from time to time in accordance with clause 11.3.

Contract: the contract between Abtech Safety Ltd and the Customer for the sale and purchase of the Goods in accordance with these Conditions.

Customer: the person or firm who purchases the Goods from Abtech Safety Ltd.

Delivery Location: has the meaning given in clause 4.2.

Force Majeure Event: an event, circumstance or cause beyond a party's reasonable control.

Goods: the goods (or any part of them) set out in the Order.

Order: the Customer's order for the Goods, as set out in the Customer's purchase order form, the Customer's written acceptance of the Supplier's quotation, or overleaf, as the case may be.

Specification: any specification for the Goods, including any related plans and drawings, that is agreed by the Customer and Abtech Safety Ltd.

Supplier: Abtech Safety Ltd (registered in England and Wales with company number 02656103).

1.2 Interpretation

(a) A person includes a natural person, corporate or unincorporated body (whether or not having separate legal personality).

(b) A reference to a party includes its successors and permitted assigns.

(c) A reference to legislation or a legislative provision is a reference to it as amended or re-enacted. A reference to legislation or a legislative provision includes all subordinate legislation made under that legislation or legislative provision.

(d) Any words following the terms including, include, in particular, for example or any similar expression shall be interpreted as illustrative and shall not limit the sense of the words preceding those terms.

(e) A reference to writing or written excludes fax and email.

2. BASIS OF CONTRACT

2.1 These Conditions apply to the Contract to the exclusion of any other terms that the Customer seeks to impose or incorporate, or which are implied by law, trade custom, practice or course of dealing.

2.2 The Order constitutes an offer by the Customer to purchase the Goods in accordance with these Conditions. The Customer is responsible for ensuring that the terms of the Order and any applicable Specification submitted by the Customer are complete and accurate.

2.3 The Order shall only be deemed to be accepted when Abtech Safety Ltd issues a written acceptance of the Order, at which point the Contract shall come into existence.

2.4 The Customer waives any right it might otherwise have to rely on any term endorsed upon, delivered with or contained in any documents of the Customer that is inconsistent with these Conditions.

2.5 Any samples, drawings, descriptive matter or advertising produced by Abtech Safety Ltd and any descriptions or illustrations contained in Abtech Safety Ltd's catalogues or brochures are produced for the sole purpose of giving an approximate idea of the Goods referred to in them. They shall not form part of the Contract nor have any contractual force.

2.6 A quotation for the Goods given by Abtech Safety Ltd shall not constitute an offer. A quotation shall only be valid for a period of 30 calendar days from its date of issue.

3. GOODS

3.1 The Goods are described in the Specification.

3.2 The Customer shall indemnify Abtech Safety Ltd against all liabilities, costs, expenses, damages and losses (including any direct, indirect or consequential losses, loss of profit, loss of reputation and all interest, penalties and legal and other reasonable professional costs and expenses) suffered or incurred by Abtech Safety Ltd in connection with any claim made against Abtech Safety Ltd for actual or alleged infringement of a third party's intellectual property rights arising out of or in connection with Abtech Safety Ltd's use of the Specification. This clause 3.2 shall survive termination of the Contract.

3.3 Abtech Safety Ltd reserves the right to amend the Specification if required by any applicable statutory or regulatory requirement, and Abtech Safety Ltd shall notify the Customer in any such event.

4. DELIVERY

4.1 Abtech Safety Ltd shall ensure that each delivery of the Goods is accompanied by a delivery note that shows the date of the Order, the contract number, the type and quantity of the Goods

4.2 Abtech Safety Ltd shall deliver the Goods to the location set out in the Order or such other location as the parties may agree (Delivery Location) at any time after Abtech Safety Ltd notifies the Customer that the Goods are ready.

4.3 Delivery is completed on the completion of unloading of the Goods at the Delivery Location.

4.4 Any dates quoted for delivery are approximate only, and the time of delivery is not of the essence. Abtech Safety Ltd shall not be liable for any delay in delivery of the Goods that is caused by a Force Majeure Event or the Customer's failure to provide Abtech Safety Ltd with adequate delivery instructions or any other instructions that are relevant to the supply of the Goods.

4.5 If Abtech Safety Ltd fails to deliver the Goods, its liability shall be limited to the costs and expenses incurred by the Customer in obtaining replacement goods of similar description and quality in the cheapest market available, less the price of the Goods. Abtech Safety Ltd shall have no liability for any failure to deliver the Goods to the extent that such failure is caused by a Force Majeure Event or the Customer's failure to provide Abtech Safety Ltd with adequate delivery instructions or any other instructions that are relevant to the supply of the Goods.

4.6 If the Customer fails to accept delivery of the Goods within 10 Business Days of Abtech Safety Ltd notifying the Customer that the Goods are ready, then, except where such failure or delay is caused by a Force Majeure Event or Abtech Safety Ltd's failure to comply with its obligations under the Contract in respect of the Goods:

(a) delivery of the Goods shall be deemed to have been completed at 9:00 am on the third Business Day after the day on which Abtech Safety Ltd notified the Customer that the Goods were ready; and

(b) Abtech Safety Ltd shall store the Goods until actual delivery takes place, and charge the Customer for all related costs and expenses (including insurance).

4.7 If 30 Business Days after the day on which Abtech Safety Ltd notified the Customer that the Goods were ready for delivery the Customer has not taken actual delivery of them, Abtech Safety Ltd may resell or otherwise dispose of part or all of the Goods and, after deducting reasonable storage and selling costs, charge the Customer for any shortfall below the price of the Goods.

4.8 Abtech Safety Ltd may deliver the Goods by installments, which shall be invoiced and paid for separately. Each installment shall constitute a separate contract. Any delay in delivery or defect in an installment shall not entitle the Customer to cancel any other installment.

TERMS & CONDITIONS

5. QUALITY

5.1 Abtech Safety Ltd warrants that on delivery the Goods shall:

- (a) conform with the Specification; and
- (b) be free from material defects in design, material and workmanship.

5.2 Subject to clause 5.3, if:

- (a) the Customer gives notice in writing to Abtech Safety Ltd within a reasonable time of discovery that some or all of the Goods do not comply with the warranty set out in clause 5.1;
- (b) Abtech Safety Ltd is given a reasonable opportunity of examining such Goods; and
- (c) the Customer (if asked to do so by Abtech Safety Ltd) returns such Goods to Abtech Safety Ltd's place of business at the Customer's cost, Abtech Safety Ltd shall, at its option, repair or replace the defective Goods, or refund the price of the defective Goods in full.

5.3 Abtech Safety Ltd shall not be liable for the Goods' failure to comply with the warranty set out in clause 5.1 if:

- (a) the Customer makes any further use of such Goods after giving notice in accordance with clause 5.2;
- (b) the defect arises because the Customer failed to follow Abtech Safety Ltd's oral or written instructions as to the storage, commissioning, installation, use and maintenance of the Goods or (if there are none) good trade practice regarding the same;
- (c) the defect arises as a result of Abtech Safety Ltd following any drawing, design or specification supplied by the Customer;
- (d) the Customer alters or repairs such Goods without the written consent of Abtech Safety Ltd;
- (e) the defect arises as a result of fair wear and tear, wilful damage, negligence, or abnormal storage or working conditions; or
- (f) the Goods differ from the Specification as a result of changes made to ensure they comply with applicable statutory or regulatory requirements.

5.4 Except as provided in this clause 5, Abtech Safety Ltd shall have no liability to the Customer in respect of the Goods' failure to comply with the warranty set out in clause 5.1.

5.5 The terms implied by sections 13 to 15 of the Sale of Goods Act 1979 are, to the fullest extent permitted by law, excluded from the Contract.

5.6 These Conditions shall apply to any repaired or replacement Goods supplied by Abtech Safety Ltd.

6. TITLE AND RISK

6.1 The risk in the Goods shall pass to the Customer on completion of delivery.

6.2 Title to the Goods shall not pass to the Customer until Abtech Safety Ltd receives payment in full (in cash or cleared funds) for the Goods and any other goods that Abtech Safety Ltd has supplied to the Customer, in which case title to the Goods shall pass at the time of payment of all such sums

6.3 Until title to the Goods has passed to the Customer, the Customer shall:

- (a) store the Goods separately from all other goods held by the Customer so that they remain readily identifiable as Abtech Safety Ltd's property;
- (b) not remove, deface or obscure any identifying mark or packaging on or relating to the Goods;
- (c) maintain the Goods in satisfactory condition and keep them insured against all risks for their full price from the date of delivery;
- (d) notify Abtech Safety Ltd immediately if it becomes subject to any of the events listed in clause 9.1(b) to clause 9.1(d).

6.4 At any time before title to the Goods passes to the Customer, Abtech Safety Ltd may require the Customer to deliver up all Goods in its possession that have not been resold, or irrevocably incorporated into another product and if the Customer fails to do so promptly, enter any premises of the Customer or of any third party where the Goods are stored in order to recover them.

7. PRICE AND PAYMENT

7.1 The price of the Goods shall be the price set out in the Order.

7.2 Abtech Safety Ltd may, by giving notice to the Customer at any time before delivery, increase the price of the Goods to reflect any increase in the cost of the Goods that is due to:

- (a) any factor beyond Abtech Safety Ltd's control (including foreign exchange fluctuations, increases in taxes and duties, and increases in labour, materials and other manufacturing costs);
- (b) any request by the Customer to change the delivery date(s), quantities or types of Goods ordered, or the Specification; or
- (c) any delay caused by any instructions of the Customer or failure of the Customer to give Abtech Safety Ltd adequate or accurate information or instructions.

7.3 The price of the Goods:

- (a) excludes amounts in respect of value added tax (VAT), which the Customer shall additionally be liable to pay to Abtech Safety Ltd at the prevailing rate, subject to the receipt of a valid VAT invoice; and
- (b) excludes the costs and charges of packaging, insurance and transport of the Goods, which shall be invoiced to the Customer

7.4 Abtech Safety Ltd may invoice the Customer for the Goods before or at any time after the completion of delivery.

7.5 The Customer shall pay each invoice submitted by Abtech Safety Ltd:

- (a) within 30 days of the date of the invoice; and
- (b) in full and in cleared funds to a bank account nominated in writing by Abtech Safety Ltd, and
- (c) time for payment shall be of the essence of the Contract.

7.6 If the Customer fails to make a payment due to Abtech Safety Ltd under the Contract by the due date, then, without limiting Abtech Safety Ltd's remedies under clause 9, the Customer shall pay interest on the overdue sum from the due date until payment of the overdue sum, whether before or after judgment. Interest under this clause 7.6 will accrue each day at 4% a year above the Bank of England's base rate from time to time, but at 4% a year for any period when that base rate is below 0%.

7.7 All amounts due under the Contract shall be paid in full without any set-off, counterclaim, deduction or withholding (other than any deduction or withholding of tax as required by law).

8. LIMITATION OF LIABILITY

8.1 Abtech Safety Ltd has been unable to obtain insurance in respect of certain types of loss at a commercially viable price.

8.2 The restrictions on liability in this clause 8 apply to every liability arising under or in connection with the Contract including liability in contract, tort (including negligence), misrepresentation, restitution or otherwise.

8.3 Nothing in the Contract limits any liability which cannot legally be limited, including liability for:

- (a) death or personal injury caused by its negligence, or the negligence of its employees, agents or subcontractors (as applicable);
- (b) fraud or fraudulent misrepresentation;
- (c) breach of the terms implied by section 12 of the Sale of Goods Act 1979; or
- (d) defective products under the Consumer Protection Act 1987.

8.4 Subject to clause 8.3, Abtech Safety Ltd's total liability to the Customer shall not exceed £1,000.

8.5 Subject to clause 8.3, the following types of loss are wholly excluded:

- (a) loss of profits;
- (b) loss of sales or business;

NOTES

- (c) loss of agreements or contracts;
- (d) loss of anticipated savings;
- (e) loss of use or corruption of software, data or information;
- (f) loss of or damage to goodwill; and
- (g) indirect or consequential loss.

8.6 This clause 8 shall survive termination of the Contract.

9. TERMINATION

9.1 Without limiting its other rights or remedies, Abtech Safety Ltd may terminate this Contract with immediate effect by giving written notice to the Customer if:

- (a) the Customer commits a material breach of any term of the Contract and (if such a breach is remediable) fails to remedy that breach within 10 days of that party being notified in writing to do so;
- (b) the Customer takes any step or action in connection with its entering administration, provisional liquidation or any composition or arrangement with its creditors (other than in relation to a solvent restructuring), obtaining a moratorium, being wound up (whether voluntarily or by order of the court, unless for the purpose of a solvent restructuring), having a receiver appointed to any of its assets or ceasing to carry on business;
- (c) the Customer suspends, threatens to suspend, ceases or threatens to cease to carry on all or a substantial part of its business; or
- (d) the Customer's financial position deteriorates so far as to reasonably justify the opinion that its ability to give effect to the terms of the Contract is in jeopardy.

9.2 Without limiting its other rights or remedies, Abtech Safety Ltd may suspend provision of the Goods under the Contract or any other contract between the Customer and Abtech Safety Ltd if the Customer becomes subject to any of the events listed in clause 9.1(b) to clause 9.1(d), or Abtech Safety Ltd reasonably believes that the Customer is about to become subject to any of them, or if the Customer fails to pay any amount due under this Contract on the due date for payment.

9.3 Without limiting its other rights or remedies, Abtech Safety Ltd may terminate the Contract with immediate effect by giving written notice to the Customer if the Customer fails to pay any amount due under the Contract on the due date for payment.

9.4 On termination of the Contract for any reason the Customer shall immediately pay to Abtech Safety Ltd all of Abtech Safety Ltd's outstanding unpaid invoices and interest and, in respect of Goods supplied but for which no invoice has been submitted, Abtech Safety Ltd shall submit an invoice, which shall be payable by the Customer immediately on receipt.

9.5 Termination or expiry of the Contract, however arising, shall not affect any of the parties' rights and remedies that have accrued as at termination or expiry, including the right to claim damages in respect of any breach of the Contract which existed at or before the date of termination or expiry.

9.6 Any provision of the Contract that expressly or by implication is intended to come into or continue in force on or after termination or expiry of the Contract shall remain in full force and effect.

10. FORCE MAJEURE

Neither party shall be in breach of the Contract or otherwise liable for any failure or delay in the performance of its obligations if such delay or failure results from a Force Majeure Event. The time for performance of such obligations shall be extended accordingly. If the period of delay or non-performance continues for two months, the party not affected may terminate the Contract by giving 30 days' written notice to the affected party.

11. GENERAL

11.1 Assignment and other dealings.

- (a) Abtech Safety Ltd may at any time assign, transfer, mortgage, charge, subcontract, delegate, declare a trust over or deal in any other manner with all or any of its rights or obligations under the Contract.
- (b) The Customer may not assign, transfer, mortgage, charge, subcontract, delegate, declare a trust over or deal in any other manner with any or all of its rights or obligations under the Contract without the prior written consent of Abtech Safety Ltd.

11.2 Entire agreement.

(a) The Contract constitutes the entire agreement between the parties.

(b) Each party acknowledges that in entering into the Contract it does not rely on any statement, representation, assurance or warranty (whether made innocently or negligently) that is not set out in the Contract. Each party agrees that it shall have no claim for innocent or negligent misrepresentation or negligent misstatement based on any statement in the Contract.

11.3 Variation. No variation of this Contract shall be effective unless it is in writing and signed by the parties (or their authorised representatives).

11.4 Waiver.

- (a) A waiver of any right or remedy is only effective if given in writing and shall not be deemed a waiver of any subsequent right or remedy.
- (b) A delay or failure to exercise, or the single or partial exercise of, any right or remedy shall not waive that or any other right or remedy, nor shall it prevent or restrict the further exercise of that or any other right or remedy.

11.5 Severance. If any provision or part-provision of the Contract is or becomes invalid, illegal or unenforceable, it shall be deemed deleted, but that shall not affect the validity and enforceability of the rest of the Contract. If any provision of the Contract is deemed deleted under this clause 11.5 the parties shall negotiate in good faith to agree a replacement provision that, to the greatest extent possible, achieves the intended commercial result of the original provision.

11.6 Notices.

(a) Any notice or other communication given to a party under or in connection with the Contract shall be in writing and shall be delivered by hand or by pre-paid first-class post or other next working day delivery service at its registered office (if a company) or its principal place of business (in any other case).

(b) Any notice shall be deemed to have been received

- (i) if delivered by hand, at the time the notice is left at the proper address; and
- (ii) if sent by pre-paid first-class post or other next working day delivery service, at 9:00 am on the two Business Day after posting.

(c) This clause does not apply to the service of any proceedings or other documents in any legal action or, where applicable, any arbitration or other method of dispute resolution.

11.7 Third party rights.

(a) The Contract does not give rise to any rights under the Contracts (Rights of Third Parties) Act 1999 to enforce any term of the Contract.

11.8 Governing law. The Contract, and any dispute or claim (including non-contractual disputes or claims) arising out of or in connection with it or its subject matter or formation, shall be governed by and construed in accordance with the law of England and Wales.

11.9 Jurisdiction. Each party irrevocably agrees that the courts of England and Wales shall have exclusive jurisdiction to settle any dispute or claim (including non-contractual disputes or claims) arising out of or in connection with the Contract or its subject matter or formation.

HEAD OFFICE

**Abtech Safety Ltd
Units 1&2 Parkway Business Centre
Sixth Avenue
Deeside Industrial Park
Flintshire
CH5 2LE
TEL: +44 (0)1244 837 050**

MANUFACTURING

**Abtech Safety Ltd
Railway Road Industrial Estate
Darwen
Lancashire
BB3 3EH**

SAFETY TECHNOLOGY

**The Stone Barn
Lower Ty-Newydd
Clytha
Monmouthshire
NP15 2BQ**

Distributed By:

